

**Anti-Apolipoprotein C-II (GOAT) Antibody**  
**APOLIPOPROTEIN C-II Antibody**  
**Catalog # ASR5072****Specification**

---

**Anti-Apolipoprotein C-II (GOAT) Antibody - Product Information**

Host	Goat
Conjugate	Unconjugated
Target Species	Human
Reactivity	Human
Clonality	Polyclonal
Application	WB, IHC, E, IP, I, LCI
Application Note	Anti-apoLipoprotein antibodies have been tested in immunohistochemistry and used for indirect trapping ELISA for quantitation of antigen in serum using a standard curve, immunoprecipitation, immunohistochemistry, and for western blotting for highly sensitive qualitative analysis.
Physical State	Liquid (sterile filtered)
Buffer	0.125 M Sodium Borate, 0.075 M Sodium Chloride, 0.005 M EDTA, pH 8.0
Immunogen	apoLipoprotein Type C-II produced synthetically in full-length form (not selected epitopes) using conventional peptide technology.
Preservative	0.01% (w/v) Sodium Azide

**Anti-Apolipoprotein C-II (GOAT) Antibody - Additional Information****Gene ID** 344**Other Names**  
344**Purity**

This product has been prepared by immunoaffinity chromatography using immobilized antigens followed by extensive cross-adsorption against other apoLipoproteins and human serum proteins to remove any unwanted specificities. Typically less than 1% cross reactivity against other types of apoLipoprotein was detected by ELISA against purified standards. This antibody reacts with human apoLipoprotein C-II and has negligible cross-reactivity with Type A-I, A-II, B, C-I, C-III, E and J apoLipoproteins. Specific cross reaction of anti-apoLipoprotein antibodies with antigens from other species has not been determined. Non-specific cross reaction of anti-apoLipoprotein antibodies with other human serum proteins is negligible.

**Storage Condition**

Store vial at 4° C prior to opening. This product is stable 4° C as an undiluted liquid. Dilute only prior to immediate use. For extended storage mix with an equal volume of glycerol, aliquot contents and freeze at -20° C or below. Avoid cycles of freezing and thawing.

**Precautions Note**

This product is for research use only and is not intended for therapeutic or diagnostic applications.

**Anti-Apolipoprotein C-II (GOAT) Antibody - Protein Information**

**Name** APOC2

**Synonyms** APC2

**Function**

Component of chylomicrons, very low-density lipoproteins (VLDL), low-density lipoproteins (LDL), and high-density lipoproteins (HDL) in plasma. Plays an important role in lipoprotein metabolism as an activator of lipoprotein lipase. Both proapolipoprotein C-II and apolipoprotein C-II can activate lipoprotein lipase. In normolipidemic individuals, it is mainly distributed in the HDL, whereas in hypertriglyceridemic individuals, predominantly found in the VLDL and LDL.

**Cellular Location**

Secreted.

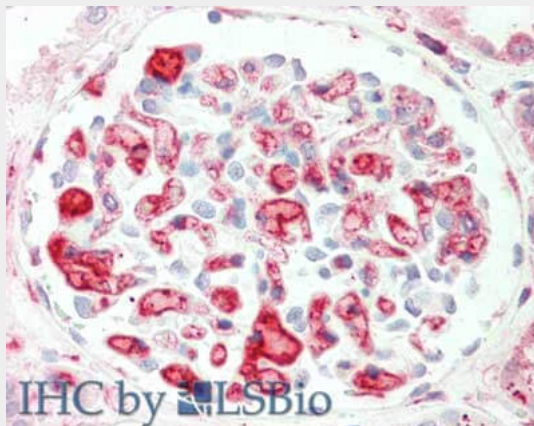
**Tissue Location**

Liver and intestine..

**Anti-Apolipoprotein C-II (GOAT) Antibody - Protocols**

Provided below are standard protocols that you may find useful for product applications.

- [Western Blot](#)
- [Blocking Peptides](#)
- [Dot Blot](#)
- [Immunohistochemistry](#)
- [Immunofluorescence](#)
- [Immunoprecipitation](#)
- [Flow Cytometry](#)
- [Cell Culture](#)

**Anti-Apolipoprotein C-II (GOAT) Antibody - Images**

Immunohistochemistry of goat anti-Apolipoprotein C-II antibody. Tissue: human kidney. Fixation:

formalin fixed paraffin embedded. Antigen retrieval: not required. Primary antibody: Apolipoprotein C-II at 5 µg/mL for 1 h at RT. Secondary antibody: Peroxidase goat secondary antibody at 1:10,000 for 45 min at RT. Staining: Apolipoprotein C-II as precipitated red signal with hematoxylin purple nuclear counterstain.

**Anti-Apolipoprotein C-II (GOAT) Antibody - Background**

This antibody is suitable for cardiovascular research.